

Protecting your screen

To ensure long lasting viewing enjoyment keep the screen rolled up when not in use. Check both the front and back surfaces before retracting into the case to make sure it is free of dust, dirt, insects or other foreign matter. Use a soft brush or cloth to lightly remove any foreign particles.

Cleaning your screen

Use warm water with a mild detergent to remove any marks on the surface (only dab, do not rub) or screen casing. Immediately dry the screen with a soft cloth or towel. Do not leave it to air dry.

Never use any solvents, chemicals or abrasive cleaners on the screen surface as they can permanently damage the screen surface.

Size	Format	Image (mm)	Case Length (mm)	Weight (kg)
70"	4:3	1420 x 1065	1585	5.2
80"	4:3	1625 x 1220	1790	6.0
100"	4:3	2030 x 1520	2190	7.2
70"	16:9	1550 x 870	1710	5.4
80"	16:9	1770 x 995	1930	6.1

Grandview

Imported and distributed in Australia by

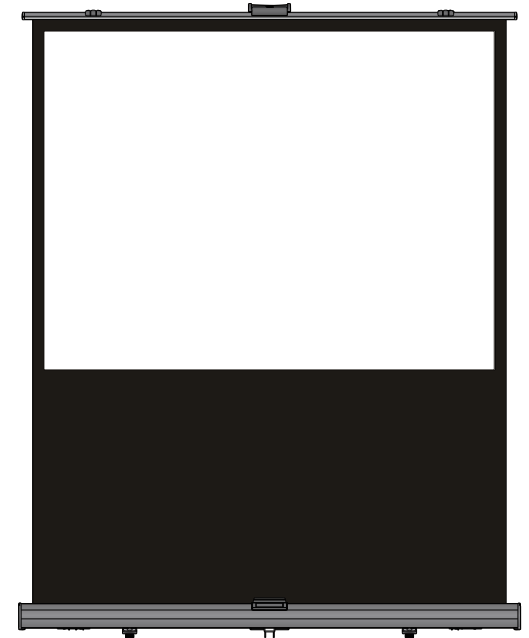


1800 251 367

orders@ambertech.com.au

ambertech.com.au

Grandview

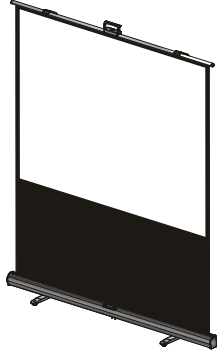


Grandview Scissor Lift
Portable Screen
User Manual



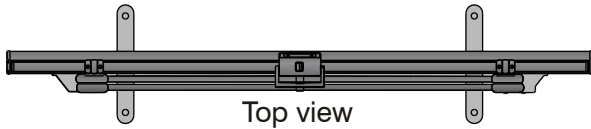
To the owner

Congratulations on purchasing a Grandview Scissor Lift Portable Screen, designed to produce the sharpest, most pleasing pictures with maximum convenience.

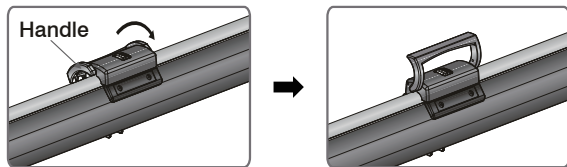


Assembling the screen

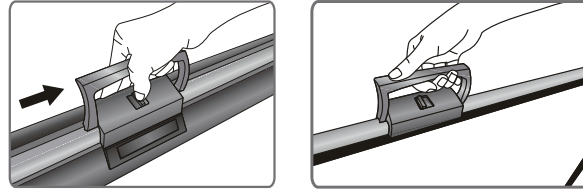
Lie the screen flat on the floor and swing out the feet so that they are perpendicular to the casing.



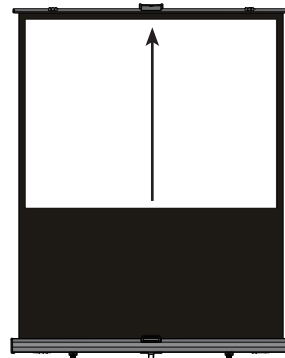
Release the handle



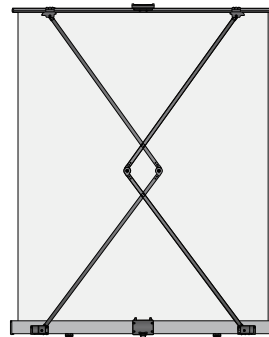
Pull the handle, releasing the lock as shown below.



Pull the screen up and stop at the desired position.



Front view

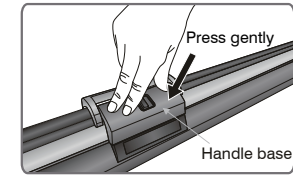
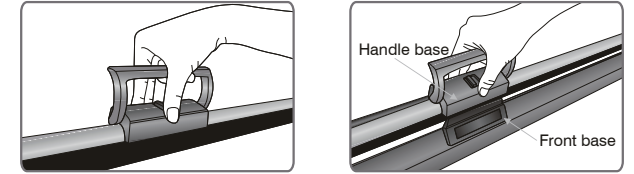


Back view

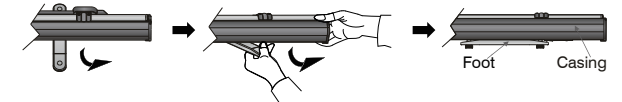
Front view

Packing the screen away

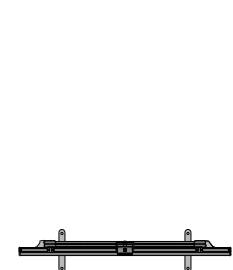
Hold the handle and slowly retract the screen into the casing. Snap the handle into the base.



Fold away the feet in line with the casing. Retraction is complete.



Front view



Top view



Side view